

# Welch Allyn® DuraShock™ Technology

Maintains Accurate  
Blood Pressure  
Readings with Lower  
Lifetime Costs.



it's precise



it's robust



it's light



it's easy

**WelchAllyn®**

Advancing Frontline Care™



# A complete blood pressure product line incorporating Welch Allyn DuraShock Technology.

Trigger Aneroids  
the sixty series



## Gold Line

All products in the Gold product range incorporate the following product features:

- Jewel movement for long life.
- Laser-engraved dial for accuracy.
- Shock resistant for accuracy and lower cost over time.
- 15-Year calibration warranty.
- Premium aesthetics.

## Gold Line

### DS66

DuraShock Model DS66 is one of two premium models in the new Welch Allyn product range. In addition, the DS66 features a smooth, trigger-style air release valve and ergonomic design with soft plastic inserts for added comfort.

## Silver Line

All products in the Silver product range incorporate the following product features:

- Laser-engraved dial for accuracy.
- Shock resistant for accuracy and lower cost over time.
- 10-Year calibration warranty.
- Premium aesthetics.

## Silver Line



### DS65

In addition, the DS65 features a smooth, trigger-style air release valve and identification labels that can be customised.

## Bronze Line

All products in the Bronze product range incorporate the following product features:

- Shock resistant for accuracy and lower cost over time.
- 5-Year calibration warranty.

## Bronze Line

Welch Allyn's complete line of aneroid sphygmomanometers incorporating shock-resistant DuraShock technology offers practical benefits compared to traditional aneroid sphygmomanometers. This is especially beneficial in busy medical environments where equipment needs to be as robust as possible.

With DuraShock Technology, Welch Allyn B.P. gauges:

- Remain in calibration longer than traditional aneroid B.P. gauges, providing you with more accurate readings.
- Do not need to be replaced as often as traditional aneroid B.P. gauges, giving you a lower lifetime cost.
- Have the only gauge capable of passing AAMI's shock-resistant specification of surviving a 76 cm drop onto a hard surface and remaining in calibration.

## Hand Aneroids the fifty series



### DS56

DuraShock Model DS56 is one of two premium models in the new Welch Allyn product range. In addition to the Gold Line features, the DS56 provides a traditional thumbscrew-style air release valve with soft plastic cover and bumper around the dial for comfort and added protection.

## Integrated Aneroids the forty series



### DS55

In addition to the Silver Line features, the DS55 provides a traditional thumbscrew-style air release valve and identification labels that can be customised. The DS55 is available in four colour schemes – blue, yellow, red and black.



### DS45

In addition to the Silver Line features, the DS45 provides a unique integrated, cuff-mounted design that is compact and lightweight for ease of use. The gauge rotates 360° for easy viewing from any angle. A soft plastic bumper around the dial provides added protection and a large inflation bulb with a high quality air-release valve make it easy to use.



### DS54

In addition to the Bronze Line features, the DS54 provides a traditional thumbscrew-style air release valve.



### DS44

In addition to the Bronze Line features, the DS44 has a unique integrated, cuff-mounted design that is compact and lightweight. The gauge rotates 360° for easy viewing from any angle. A soft plastic bumper around the dial provides added protection. The DS44 is available with four optional colour bumpers – blue, purple, red, and green.



## Laser Engraved Dial Face

All Welch Allyn Silver and Gold Line sphygmomanometers feature a gauge that is calibrated by a computer and laser engraved with a custom-made dial face that accurately reflects the readings of the DuraShock aneroid movement inside. This proprietary production process is unique to Welch Allyn and provides you with a sphygmomanometer of unmatched accuracy.



## Award winning technology

Patented DuraShock Technology is the first major innovation in aneroid sphygmomanometer technology in nearly 100 years. Consequently, DuraShock has already received two prestigious awards since being introduced in 2001.

DuraShock received a silver medal in the 2002 Medical Design Excellence Awards competition. The contest is the only awards program devoted exclusively to recognising contributions and advances in the design of medical products. MDEA winning products excel in the areas of product innovation, design and engineering excellence, end-user and patient benefits, and cost-effectiveness in manufacturing and healthcare delivery.

Also in 2002, DuraShock was listed as a winner at the 40th annual R&D 100 Awards. The contest recognizes the top 100 technologically significant new products of the year in a range of industries (not just medical) and saw entries from many of the most prestigious companies, research organisations, and universities in the world.

The *Chicago Tribune* has called the R&D 100 Awards "The Oscars of Invention" and others have referred to the awards as "the Nobel Prizes of applied research." The sole criterion for selection is demonstrable "technological significance" compared with competing products and technologies.

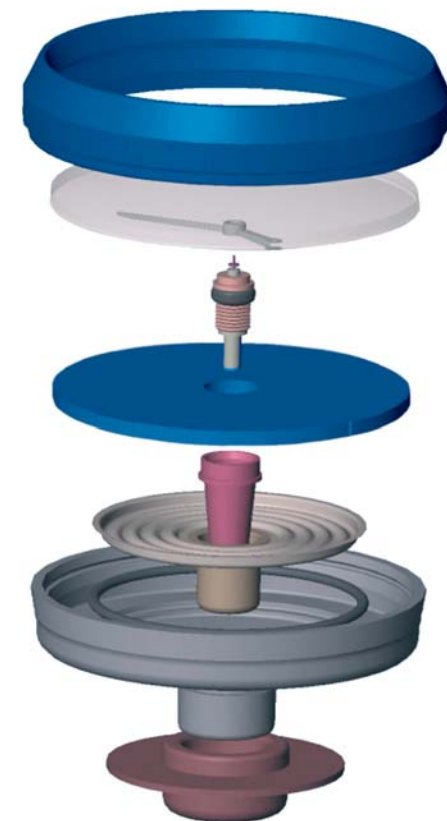
Among the R&D 100 Awards winners of years past are breakthroughs like Polacolor film, the digital wristwatch, antilock brakes, the automated teller machine, the liquid crystal display, the halogen lamp, the fax machine, the touch-sensitive screen, the Kodak Photo CD, the Nicoderm anti-smoking patch, Taxol anti-cancer drug, and high-definition television.

It is an honor to have DuraShock technology recognized by two such respected organizations.

[www.welchallyn.com](http://www.welchallyn.com)

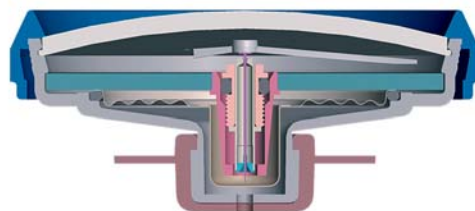
Welch Allyn U.K. Ltd.  
Cublington Road, Aston Abbots,  
Buckinghamshire HP22 4ND, England  
Tel: 0 207 365 6780 Fax: 0 207 365 9694

Welch Allyn European Customer Service  
Navan Business Park, Dublin Road,  
Navan, County Meath, Ireland  
Tel: +353 46 906 7790 Fax: +353 46 906 7754



## How DuraShock Technology Works

In traditional aneroid sphygmomanometer design, several delicate gears and springs convert and amplify vertical movement of the pinion to rotational movement to turn the pointer. The DuraShock gear-free design uses a single helix spring to directly convert the vertical movement of the pinion to rotation of the pointer without the use of a multi-step gear arrangement.



By creating a gear-free design, the Welch Allyn Durashock has fewer moving parts providing a gauge which is shock resistant and lighter than traditional gauges. Until now, a dropped sphygmomanometer required recalibration or replacement. The DuraShock can fall 76 cm onto a hard surface and still remain accurate. It is the only gauge capable of meeting the AAMI\* Shock Resistant specification.

\* Association for the Advancement of Medical Instrumentation

**WelchAllyn®**

Advancing Frontline Care™

Welch Allyn PTY. LTD, S. Africa  
394 Surrey Ave, Ferndale, Randburg 2194 South Africa  
P O Box 809, Fontainebleau, South Africa 2032  
Tel: 0 11 777 7555 Fax: 0 11 777 7556