

Accessories

for the Hill-Rom® 900 bed



Hand pendant*

AD281B
AD282A



Control on flexible arm*

AD280A
AD283A



Straight fixed height IV pole,
4 hooks

AD294A

Adjustable IV pole, 4 hooks

AD298A

One hand adjustable IV pole,
4 hooks

AD299A



Monitor tray*
light grey

AD244B-MM



Syringe driver tray

AC963A



5th wheel

with integral castors

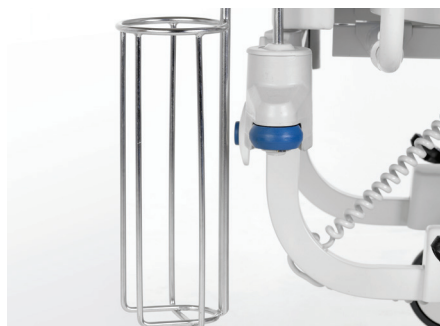
AD276A R0

with single-band castors

AD276A R1

with double-band castors

AD276A R2



Oxygen tank holder**

100 mm Ø tank (model D)

AD101A

100 mm Ø tank (model E)

AD102A

140 mm Ø tank (model B5)

AC959A



Fixed lifting pole
(light grey)

AD810A-MM

Angle pivoting lifting pole
(light grey)

AD811A-MM

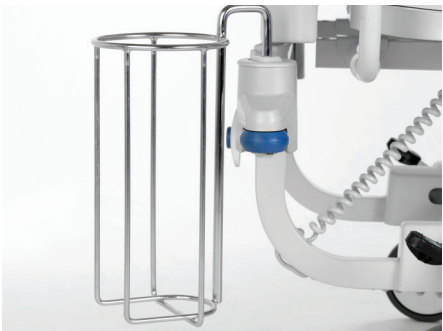
IV hooks on lifting pole

AC953A

Enhancing outcomes for
patients and their caregivers:

Hill-Rom

Accessories
for the Hill-Rom 900 bed



Pivoting bottle holder 3 litre **AC962A**



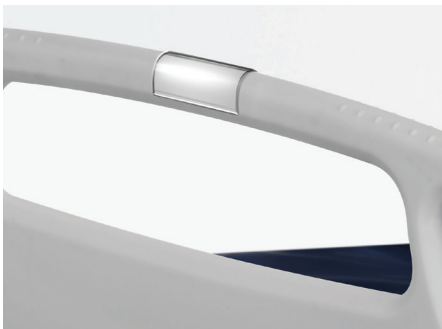
Safety nets
for 3/4 length siderails **AD312A**

3/4 length siderails

AD271B



Foam extension cushion
with welded cover **AD231A-07**



Label holder

AD325A



Electric cord holder

AD292A

Accessories for the Hill-Rom 900 bed



Foot section support*
light grey

AD270B-MM



Egress handles* (x2)
at foot end
at head end

AD290B

AD296B



Wall bumper*

AD277A



Traction frame T39*

ST875A

Kinetic IV pole

ST866A

Kinetic kit 1A for traction/suspension of inferior limb

ST865A

Kinetic kit 2 for traction/suspension of superior limb

ST867A

Kinetic kit 3 for pelvic suspension

ST868A

Kinetic kit 4 for cervical suspension

ST869A

Kinetic tube T13

ST870A

Kinetic tube T25

ST871A

Traction - partial assembly at foot end

ST873A

Fixed clamp bar of 40 cm

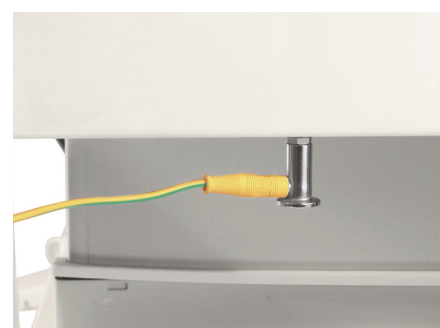
ST874A

Head porch bar

ST876A

Foot porch bar

ST877A



Equipotential cable link

AC968A

* Accessory is only available with certain models of the Hill-Rom 900 bed, depending on the year of production and configuration

** Accessory not available in combination with 125 mm castors

To confirm which versions of accessories listed for the Hill-Rom 900 bed are applicable, please note the serial number of your bed(s) (i.e. HRPXXX), and contact your local Hill-Rom representative.

Hill-Rom is a leading global medical technology company with more than 10,000 employees worldwide. We partner with healthcare providers in more than 100 countries, across all care settings, by focusing on patient care solutions that improve clinical and economic outcomes in five core areas: **Advancing Mobility, Wound Care and Prevention, Patient Monitoring and Diagnostics, Surgical Safety and Efficiency and Respiratory Health**. The people, products and programs of Hill-Rom work towards one mission: **Every day, around the world, we enhance outcomes for patients and their caregivers.**



Hill-Rom is committed to the concept that mobilising people early and supporting their independence, improves life - in the hospital and at home.

The Hill Rom 900 bed is intended for use in intensive, acute and ambulatory care settings for patients with a weight ≥ 40 kg, height ≥ 146 cm and BMI ≥ 17 .

Class I

Manufacturer: Hill-Rom S.A.S. – BP 14 ZI du Talhouët 56330 Pluvigner France

This medical device is a regulated health product which, pursuant to such regulation bears a CE mark. Hill-Rom recommends that you carefully read the detailed instructions for safe and proper use included in the documents accompanying the medical devices. The personnel of healthcare establishments are responsible for the proper use and maintenance of these medical devices.

Hill-Rom reserves the right to make changes without notice in design, specifications and models. The only warranty Hill-Rom makes is the express written warranty extended on the sale or rental of its products.

©2017 Hill-Rom Services, Inc. ALL RIGHTS RESERVED.
Doc. No: 5EN129310-05, 13 June 2017

Not all products/options are available in all countries.
For further information about our products and services, please
contact your local Hill-Rom representative or visit our webpage:

www.hill-rom.com

Enhancing outcomes for
patients and their caregivers:

Hill-Rom